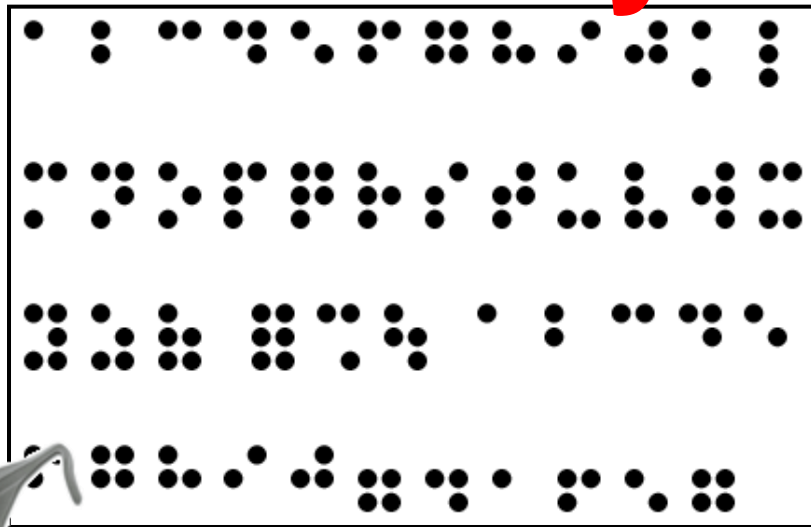


LASER RISK



You don't want to use the
braille system!



PROTECT YOUR EYES!

LASER RISK

These glasses

help you

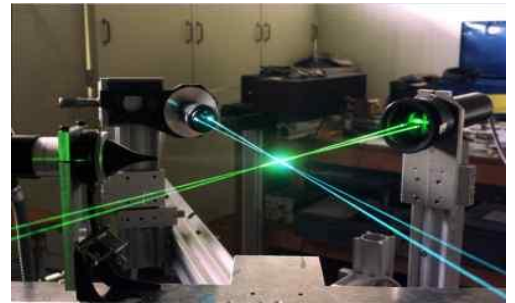
to see better...



These glasses

help you

to keep your vision!



PROTECT YOUR EYES!

CHEMICAL RISK

These glasses

help you

to see better...



These glasses



help you

to keep your vision!



PROTECT YOUR EYES!

NOISE RISK

Reading

music

is good.



Hearing it

is better!



PROTECT YOUR HEARING!

CHEMICAL RISK

When it smells bad,
you work under fume hoods!



But what if

it doesn't smell?



Pictogrammes de danger

Société BONCOLOR
15bis, rue de la source 92390 PORLY
Tél.: 01-23-45-67-89

TRICHLOROETHYLENE

DANGER

Peut provoquer le cancer
Susceptible d'inclure des anomalies génétiques
Provoque une sévère irritation des yeux
Provoque une irritation cutanée
Peut provoquer somnolence ou vertiges
Nocif pour les organismes aquatiques, entraîne des effets néfastes à long terme

Ne pas manipuler avant d'avoir lu et compris toutes les précautions de sécurité
En cas d'exposition prouvée ou suspectée, consulter un médecin
Éviter le rejet dans l'environnement

N° CE 201-167-4

Attention d'avertissement

Mentions de danger

Conseils de prudence



PROTECT YOURSELF!

INDIVIDUAL PROTECTION EQUIPEMENT

The right gloves

for each activity.



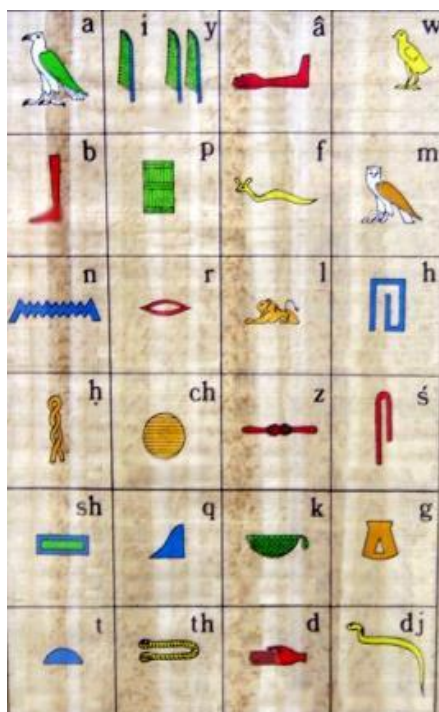
Do you wear them?



PROTECT YOUR HANDS!

CHEMICAL RISK

Learn to read the latest signs!



Egypt
1150 bc.



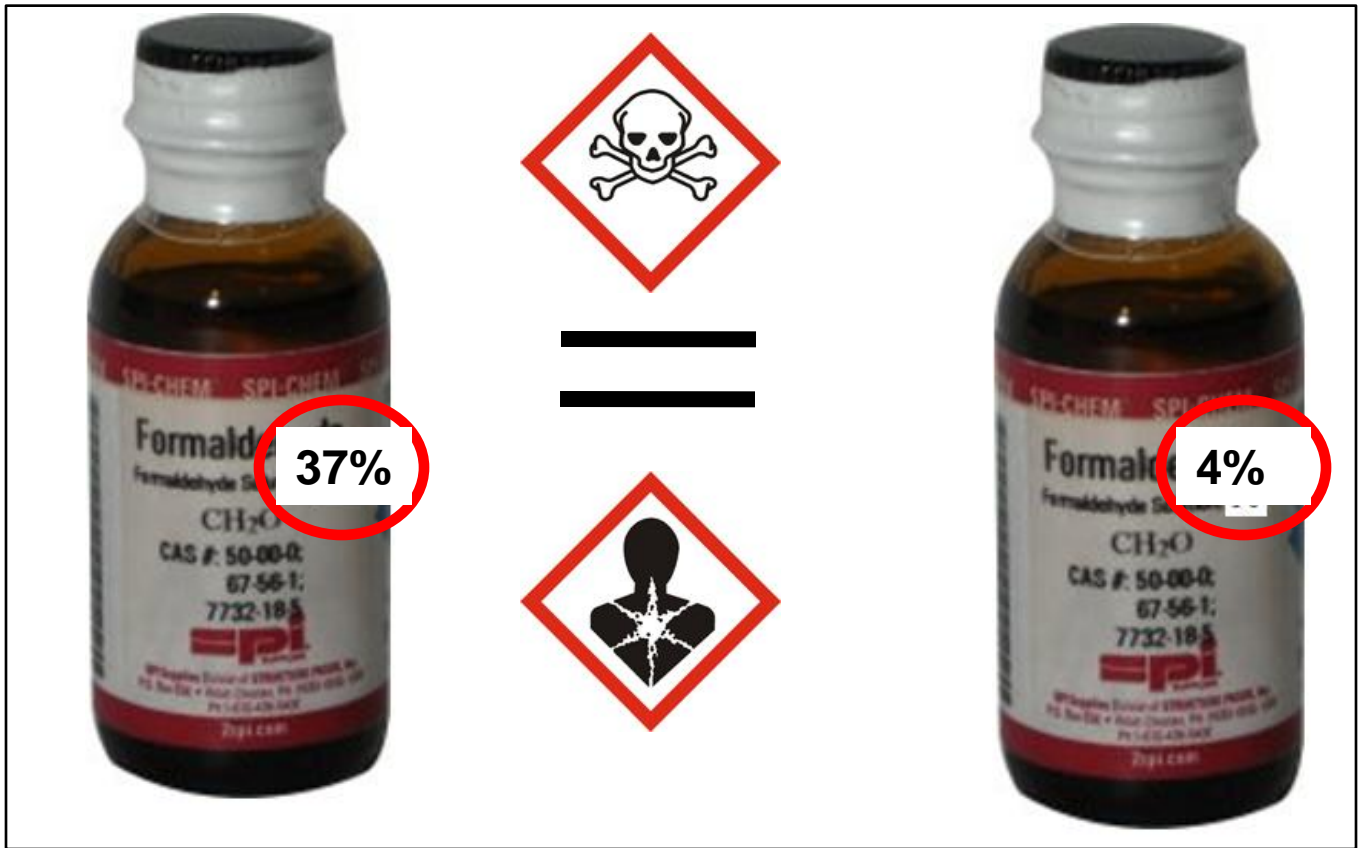
France
3rd millenium



Signs change... ...change with them!

CHEMICAL RISK

Even diluted, there's still a risk!



The effects will occur more slowly and insidiously!

CHEMICAL RISK



=



Create your labels online :

<http://etiquette.scienceamusante.net/form.php>

<http://etiquette.scienceamusante.net/sgh/index.php>

	Fabricant / distributeur SPI	
Nom du produit Formaldehyde 4%		
Création gratuite d'étiquette : http://scienceamusante.net/etiquette		
Composition / Caractéristiques non renseigné		
Phrases de risques : Toxique par inhalation, par contact avec la peau et par ingestion. Provoque des brûlures. Toxique : danger d'effets irréversibles très graves par inhalation, par contact avec la peau et par ingestion. Effet cancérogène suspecté		
Conseils de prudence : non renseigné		
Date : 17/04/2009		Référence : 50-00-0



Don't lose track of information!

CHEMICAL, BIOLOGICAL, RADIOACTIVE RISK

You know



the risk,

**your
baby
doesn't!**



**Protect your baby!
Contact your
workplace doctor!**

CHEMICAL AND BIOLOGICAL RISK

When you shut the door
with your gloves



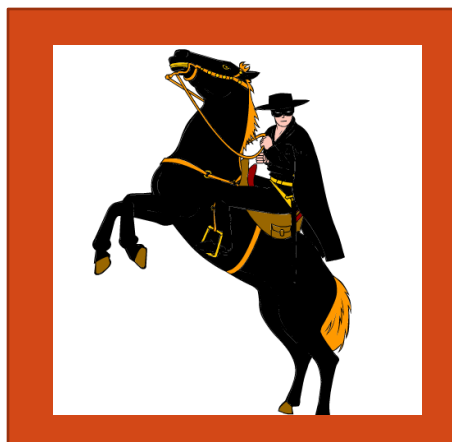
... others don't know if
There's a risk...



Apply the rule of
« ONE GLOVE »!

WEAR YOUR GEAR

Even super heroes wear the proper gear to work...



Don't forget yours!



PROTECT YOURSELF!

FIRE SAFETY

While you are reading this
poster...
If a fire starts,

WATER



POWDER

CO²

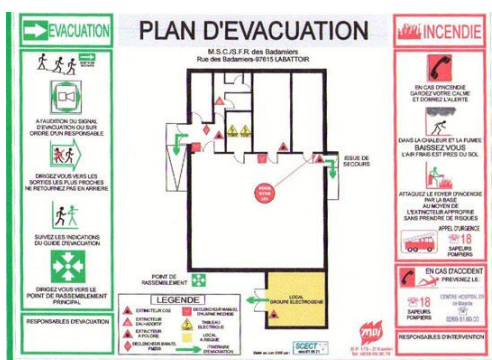
Which one will you choose ?



GET TRAINED!

FIRE SAFETY

The fire alarm rings...



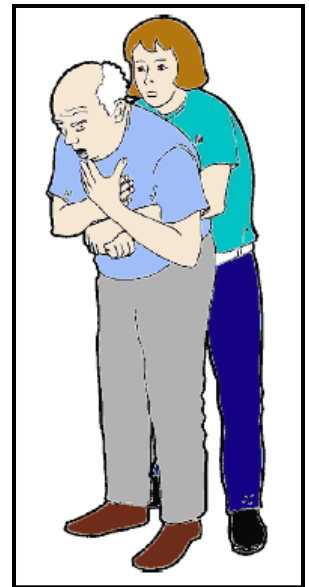
...do you know where
the safety exits
and meeting points are?



CONSULT THE
EVACUATION MAP!

FIRST AID

Somebody is suffocating or feeling faint ...



... do you know the techniques that could save his life ?



GET TRAINED!

FIRST AID

Somebody is feeling faint or is injured...



... do you know where the nearest first-aider is?



FIND OUT YOUR SAFETY OFFICER!

FIRST AID

Somebody has a heart-attack...

... do you know the techniques that could save their life?



UNIVERSITÉ
MEDITERRANÉE
AIX-MARSEILLE II



ALERTE IMMEDIATE



RCP IMMEDIATE



DEFIBRILLATION



SOINS SPECIALISES



GET TRAINED!



FIRST AID

Somebody has a heart attack...



CE SITE
EST EQUIPE D'UN
DEFIBRILLATEUR
SEMI-AUTOMATIQUE

Vous êtes témoin d'un arrêt cardiaque...

*Des défibrillateurs sont à la disposition
du personnel et des usagers du
campus.*



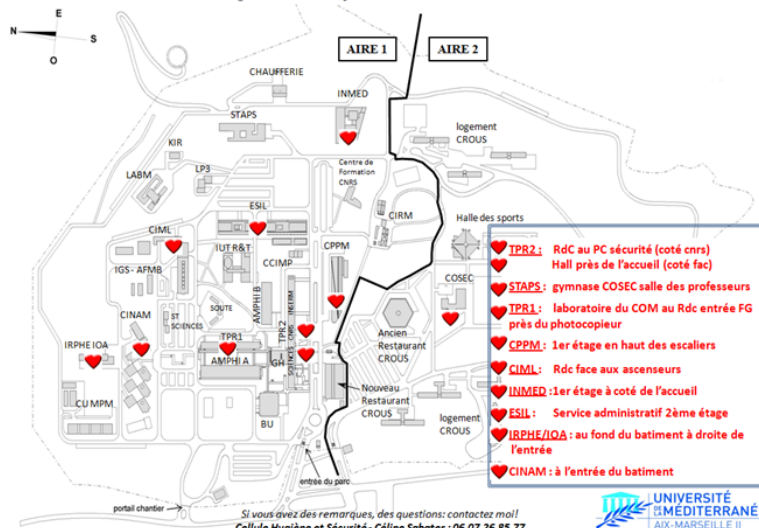
LA CHAÎNE DE SURVIE



... que faire?

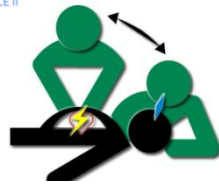
1. Appeler les secours (0)15 (ne jamais raccrochez en 1^{er}) et demander à une personne d'aller chercher le plus vite possible un défibrillateur.
2. Pratiquer la RCP
30 massages et 2 insufflations
3. Allumer le défibrillateur et suivre les instructions.
4. Poursuivre jusqu'à l'arrivée des secours.

Plan du campus de Luminy



Localisation des défibrillateurs sur le campus

... do you know where the nearest defibrillator is?



FIND OUT!

ENVIRONMENT

We used
to blow candles
out to save **our resources.**



So switch off
the light...
the bulb is still burning energy.



**SAVE ENERGY
PRESERVES
THE ENVIRONMENT!**

ENVIRONMENT

The disposal cost of waste differs according to its type

Paper waste



Biological waste



Disposal **BIOLOGICAL** waste
is **20 times more**
Expensive than **DOMESTIC** waste!



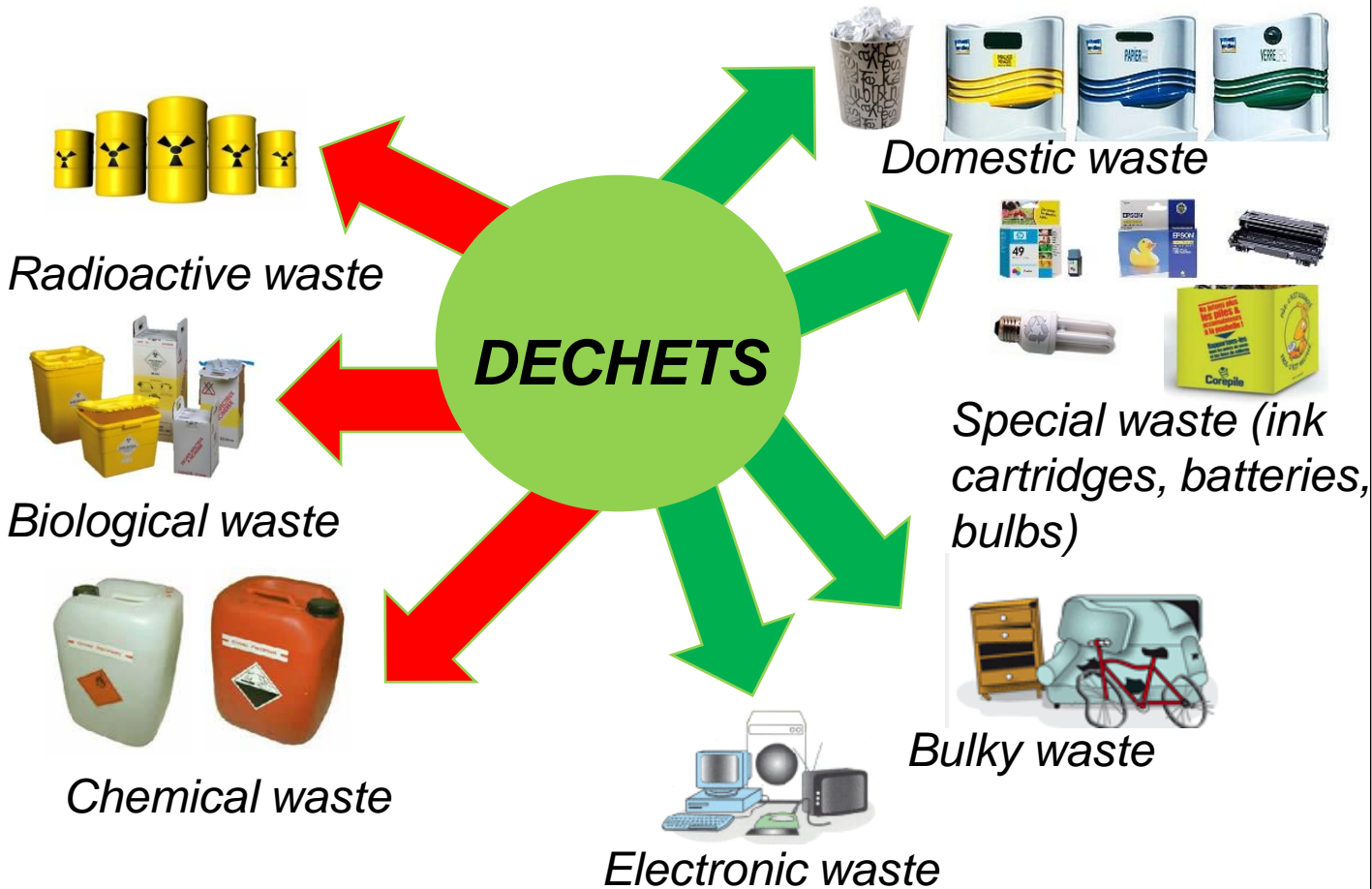
**SORT
YOUR WASTE!**

ENVIRONMENT

Each type of waste is disposed of differently

DANGEROUS WASTE

COMMON WASTE



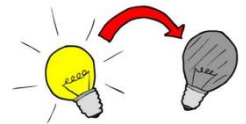
SORT YOUR WASTE!

ENVIRONMENT

If we had to pedal to produce the electricity that we are **wasting**,



we would pay
more attention.



**SAVING ENERGY
PRESERVES
THE ENVIRONMENT!**

ENVIRONMENT

Correct biological waste management means :



Closed bins

Limited risk



***waste
collection***

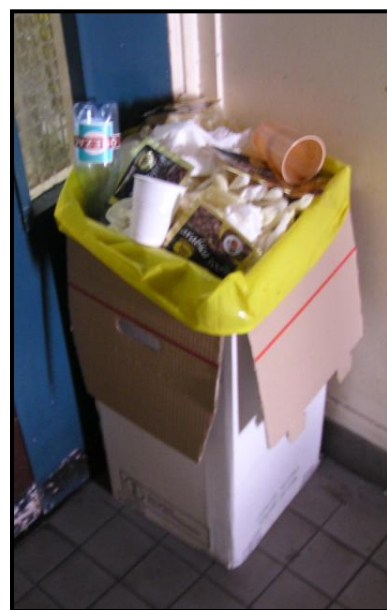


**FOLLOW
THE PROCEDURE!**

ENVIRONMENT

A DETAIL CAN WASTE EVERYTHING

Put your waste in the appropriate bin



Disposal of biological waste is **20 times more** Expensive than DOMESTIC waste!



**SORT
YOUR WASTE!**